

A person wearing a white lab coat is shown from the chest down, holding a blue rolled-up mat. The background is a light blue gradient with a geometric pattern of overlapping squares.

**superion<sup>®</sup>**  
Indirect Decompression System

Life can cause  
spinal stenosis.  
Take yours back  
with Superion.<sup>®</sup>

Superion can help you take back your  
life with a simple new procedure.

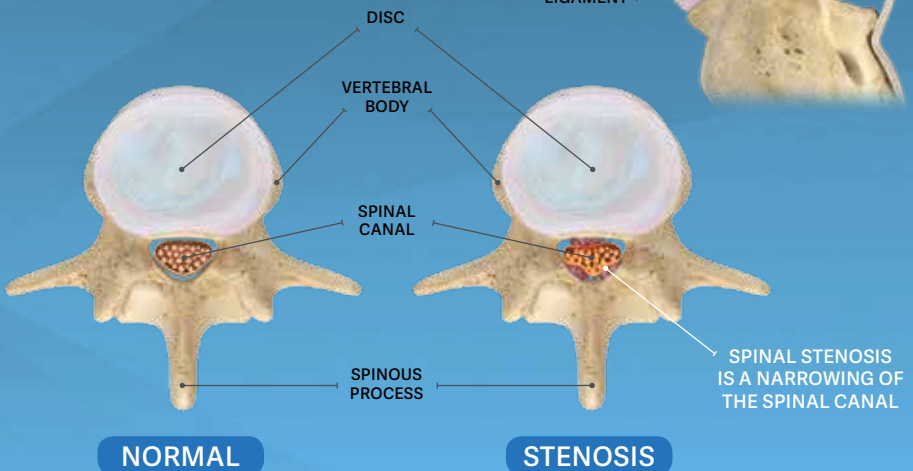
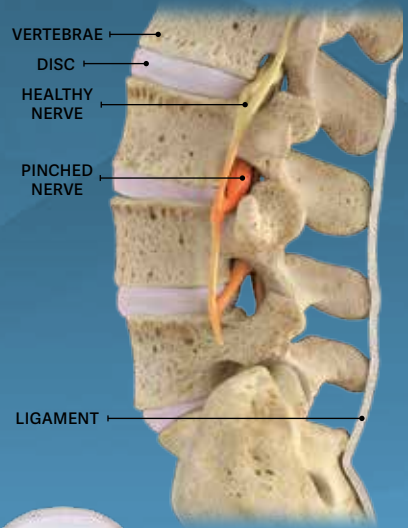
**vertiflex<sup>®</sup>**  
by **docu<sup>®</sup>**

# What is spinal stenosis?

Your spine is made up of a flexible column of 24 bones called vertebrae. Soft tissue “discs” are between each of the vertebrae. The vertebrae join together like links in a chain to support your head and body while the discs act as “shock absorbers.”

Inside the spine, there is a channel called the spinal canal. It is surrounded by the vertebrae. This canal protects a cylinder of nerves called the spinal cord.

Spinal stenosis is the result of aging and “wear and tear” on the spine from everyday activities. These changes cause the spinal canal to narrow which can “pinch” the nerves in the lower back. This is called lumbar spinal stenosis (LSS). The result is pain, numbness, tingling and/or weakness in the back and legs.



*Your doctor has recommended a simple procedure to insert a Superion implant. Your doctor has recommended this based on your total medical history. This may help relieve the leg pain you feel as a result of moderate lumbar spinal stenosis.*

---

## Superion is the appropriate first surgical option.

Superion was developed for patients with moderate spinal stenosis who have tried six months of conservative care treatment without finding relief from their pain. It is also for patients whose medical history shows that Superion may be their best treatment option because traditional spinal surgery could be too demanding.

People who will benefit the most from the Superion implant are those whose symptoms are relieved when bending forward, such as when pushing a shopping cart. Leaning forward causes the spinal canal to open, which relieves pressure on the nerves. The Superion implant produces the same effect—relieving pressure on the nerves—without leaning forward.



*Superion shown  
at actual size.*

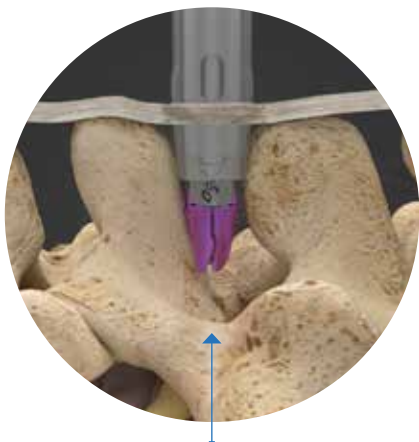
Superion is a small implant, available in different sizes to best match your spinal anatomy. It is made of titanium, a material used for medical implants because it is lightweight with great strength. Titanium is biocompatible and will not cause inflammation or rejection.



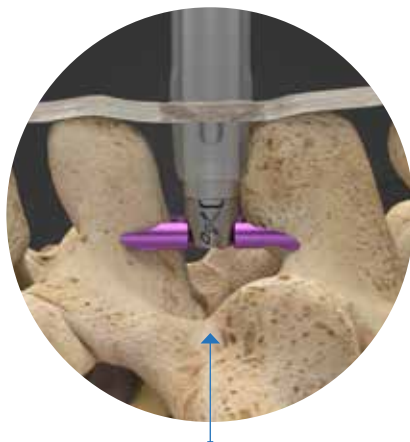
## A simple, short procedure.

Placing the Superion typically takes about thirty minutes. It is implanted through a small incision in your lower back. The procedure can be performed in either the hospital operating room or an outpatient surgical center. The procedure involves no tissue or bone damage and minimal blood loss.

The Superion is designed to preserve your mobility while still providing the stability your spine requires.



Superion is placed between the vertebrae and holds them open. This relieves the pressure on the nerves in the spinal canal.



When the Superion is placed, the device arms are opened and surround the spinous process. This ensures that the Superion will not dislodge.

**After the procedure**, you may enjoy significant reduction in leg pain within the first few days. Your doctor will review Post-Operative Care Guidelines with you. This will let you know how to care for the surgical site after the procedure. Your doctor will also talk to you about limiting your activity levels immediately after the procedure, and how to increase activities as you heal. Certain risks are associated with the use of the Superion. Consult your doctor for full information regarding these risks.

# A positive outcome for you.

The Superion system offers a safe and effective alternative to other more invasive surgical options, such as spinal fusion. It is a minimally invasive surgical option. It has been thoroughly tested to ensure it can successfully treat leg pain symptoms associated with moderate spinal stenosis.

Among those patients in the clinical trial that were followed up through forty-eight months after surgery, almost all expressed overall satisfaction with the Superion implant.

## Functional improvement & patient satisfaction at 48 months

	24 Months	36 Months	48 Months
Physical Function	73%	80%	79%
Symptom Severity	77%	84%	83%
<b>Patient Satisfaction</b>	<b>84%</b>	<b>92%</b>	<b>87%</b>

In the future, if your stenosis progresses from moderate to severe, your doctor will consider other procedures. The Superion procedure is reversible and will not remove the structure (bones or tissue) of the spine. All future treatment options will still be available.



## Less pain, more movement!

If you have been living with leg pain from moderate LSS, you know the toll it can take on your day-to-day life. Today, there is a minimally invasive medical solution that may help: it is the Superior Indirect Decompression System.

Superion is a new medical treatment that may allow you to have a more active future. **Start enjoying your day-to-day life again.**



vertiflex®  
DD<sup>2</sup>

Reimagining Lumbar Stenosis Treatments.

[www.vertiflexspine.com](http://www.vertiflexspine.com)  
866.268.6486 | [info@vertiflexspine.com](mailto:info@vertiflexspine.com)